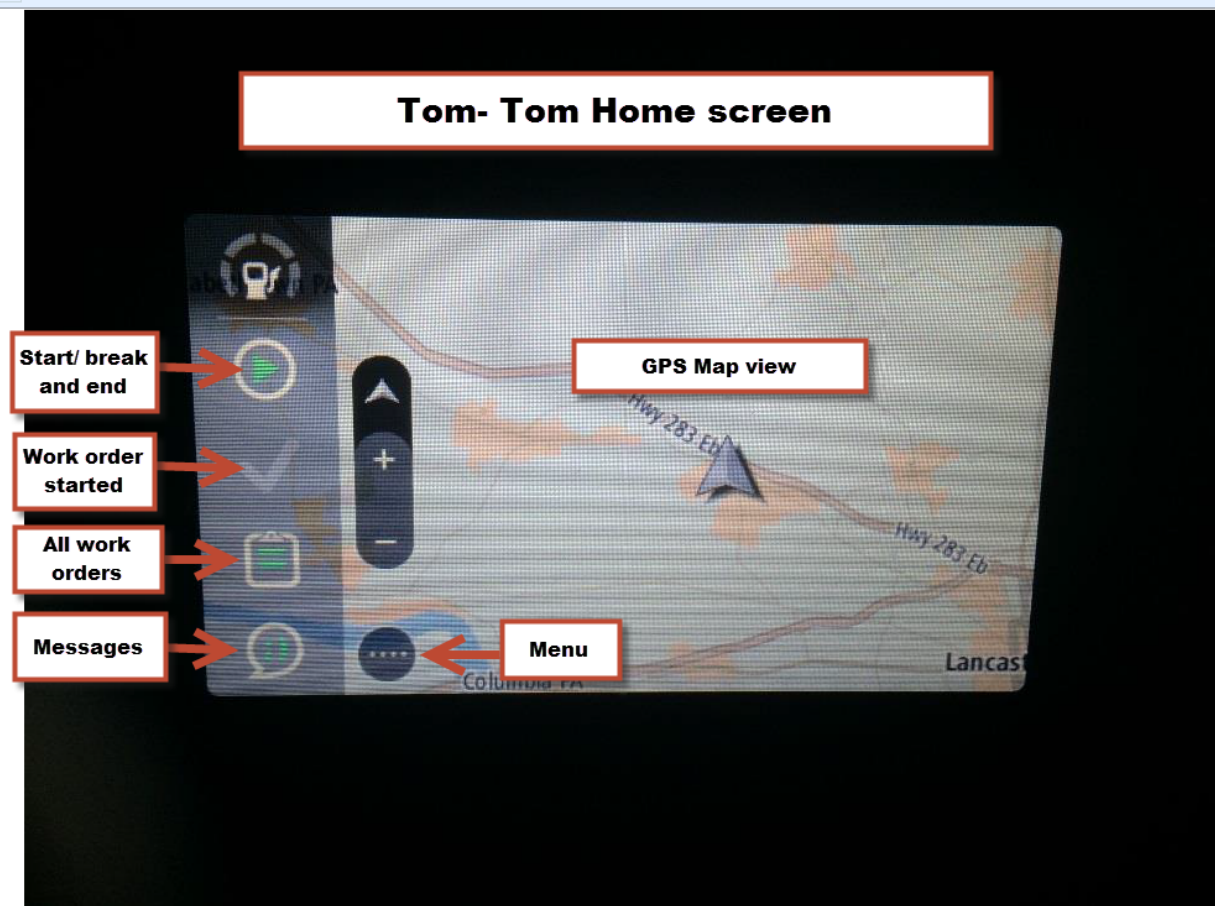
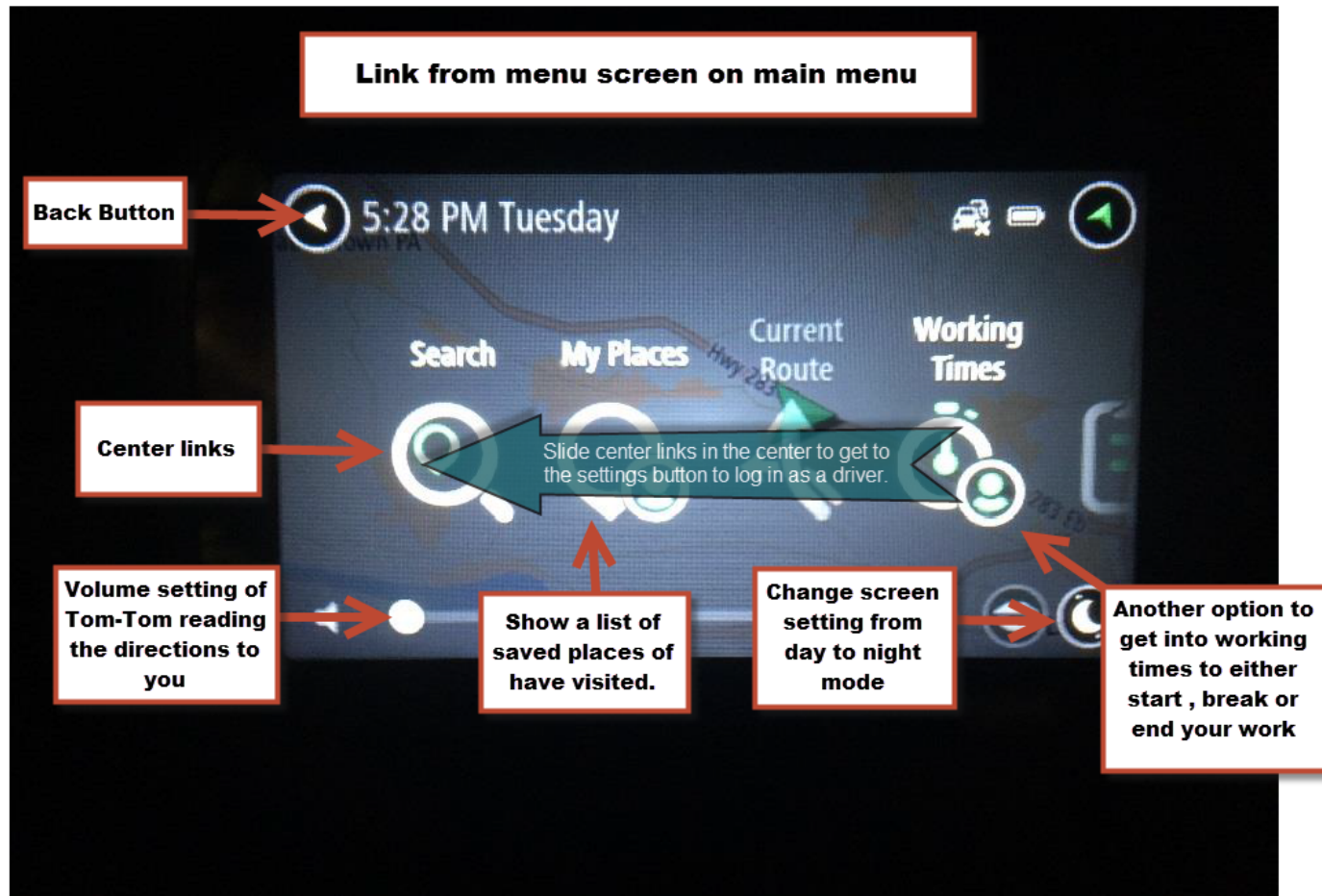


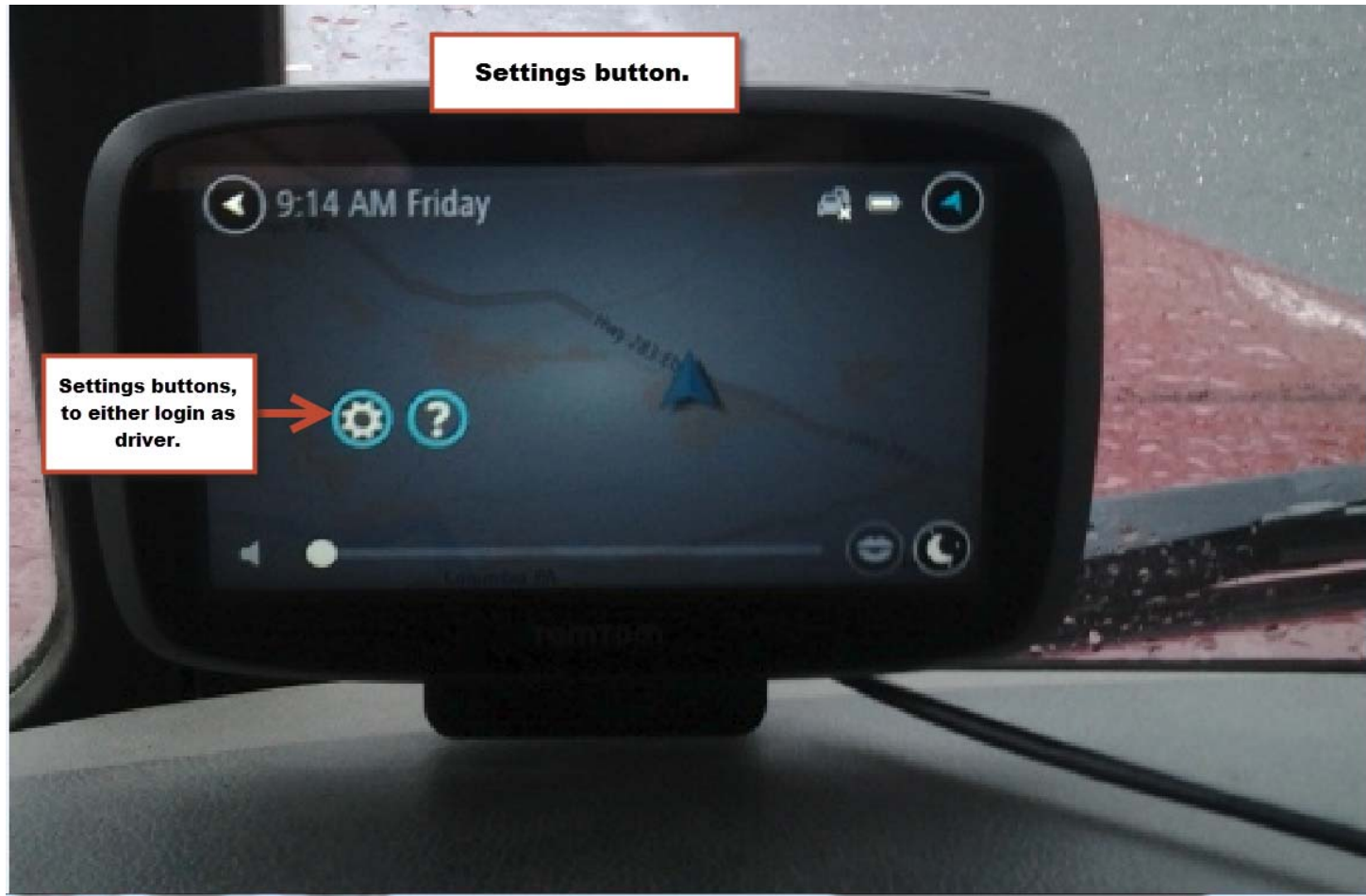
# New or different truck log in #1



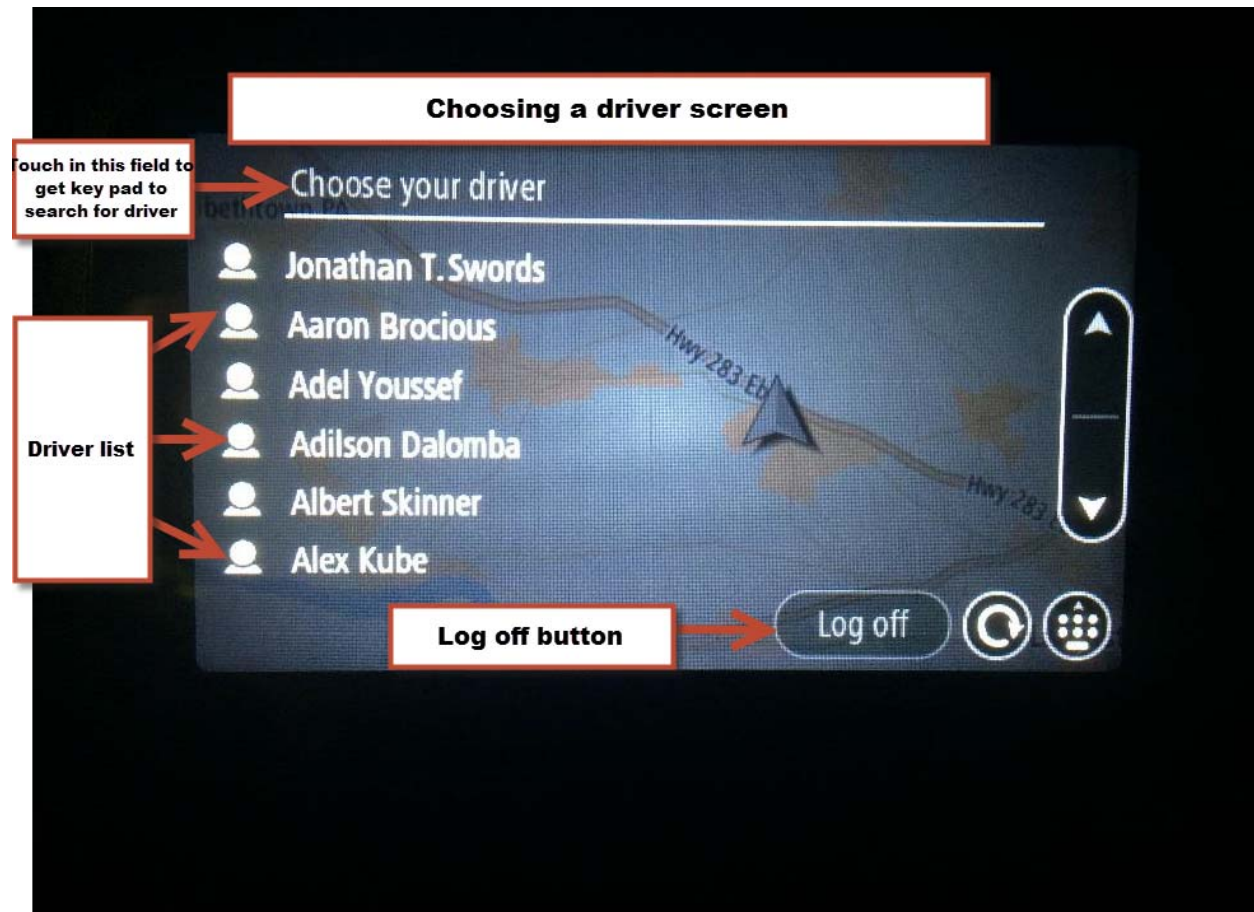
# New or different truck log in #2



# New or different truck log in #3

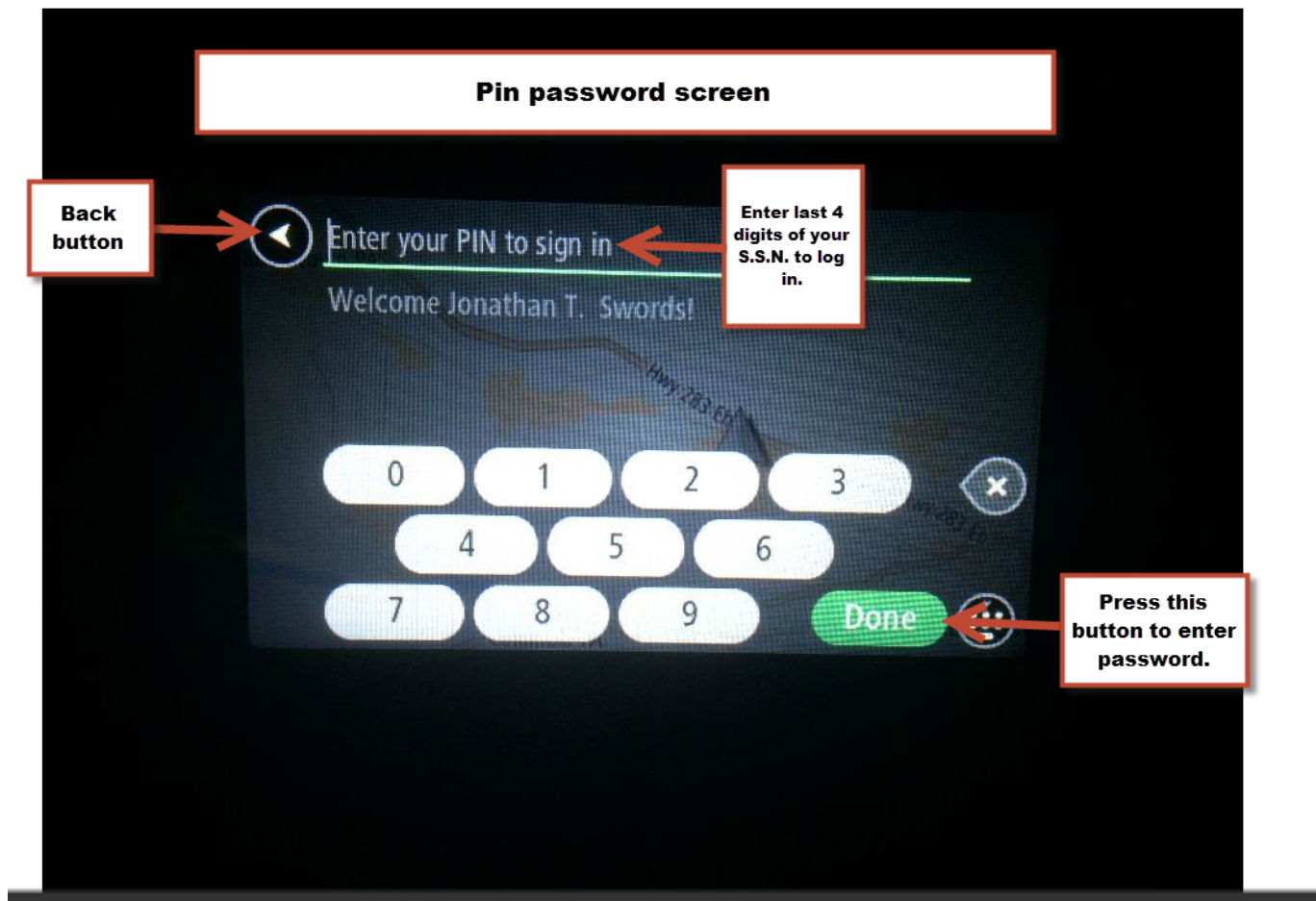


# New or different truck log in #4

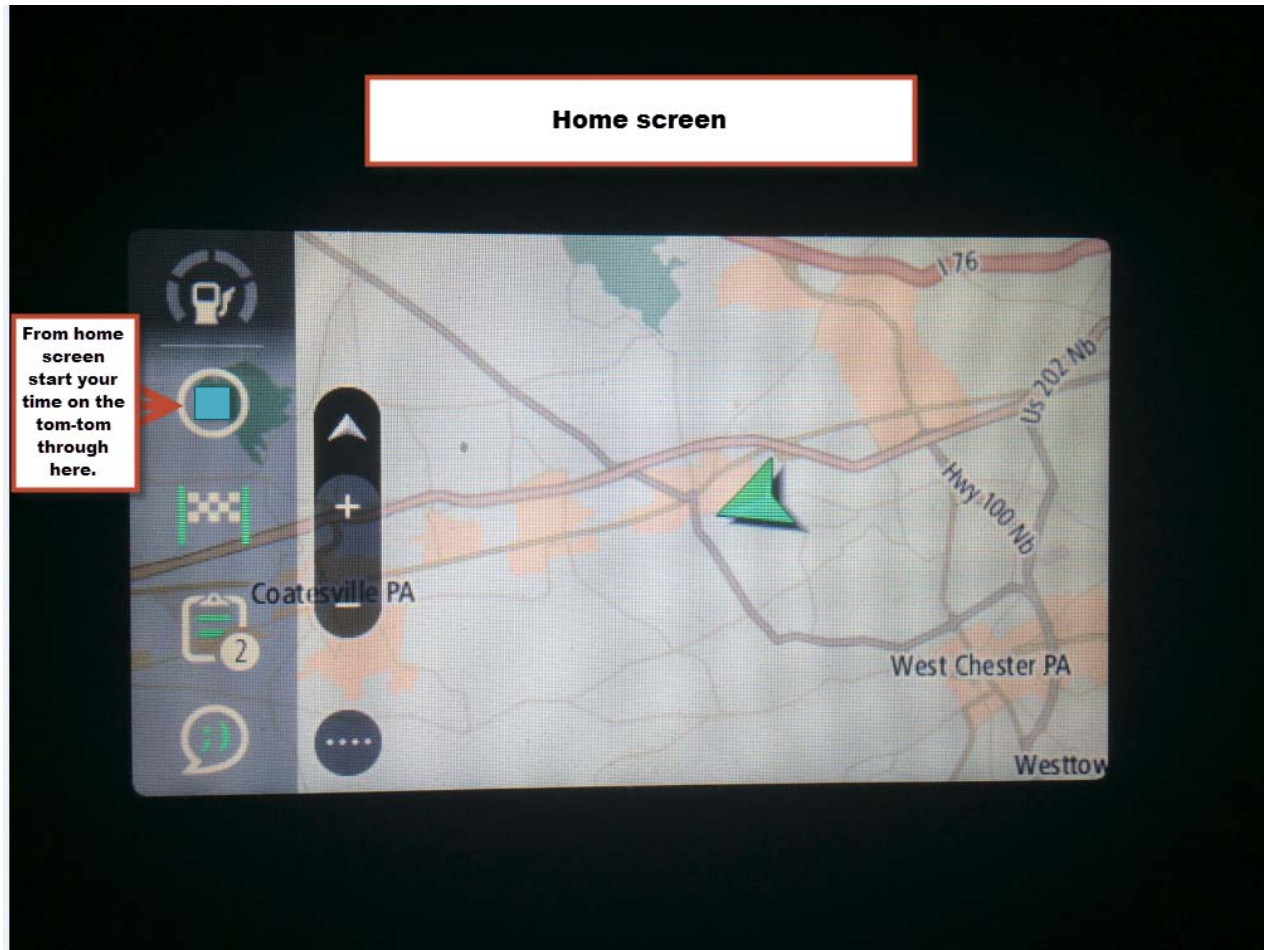




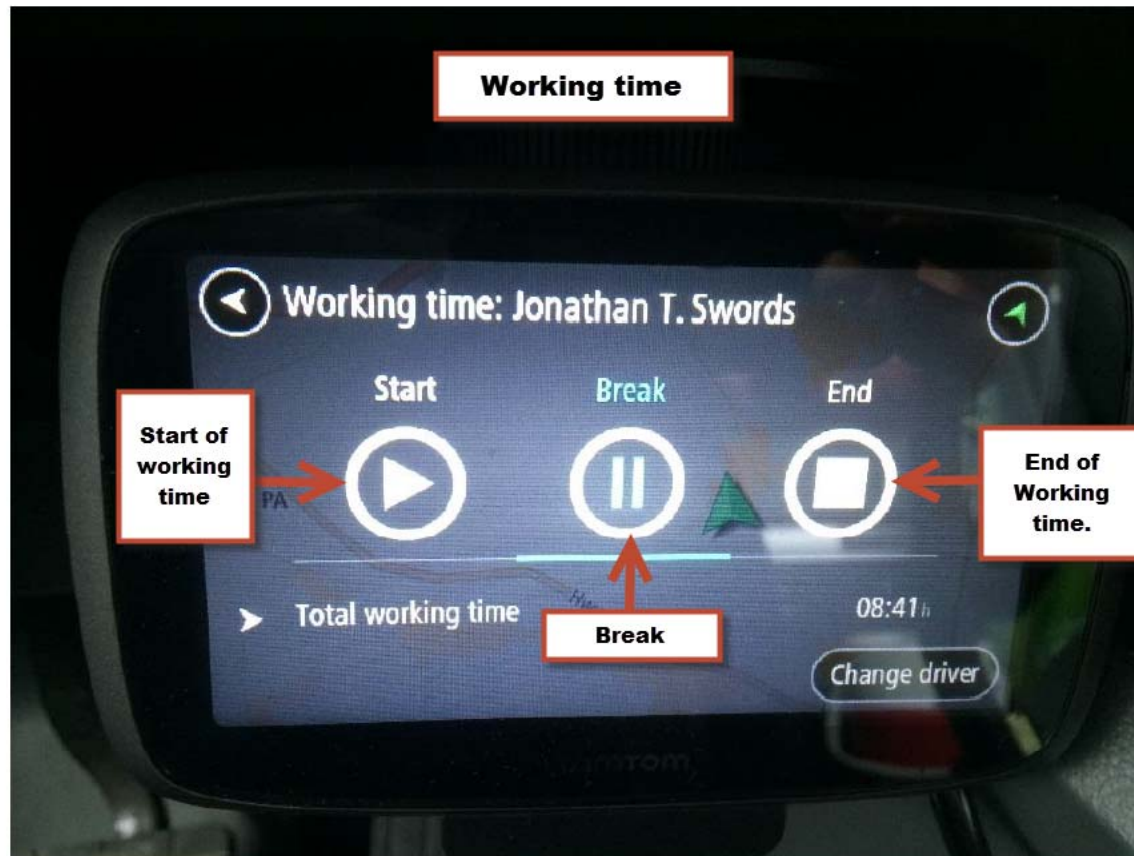
# New or different truck log in #5



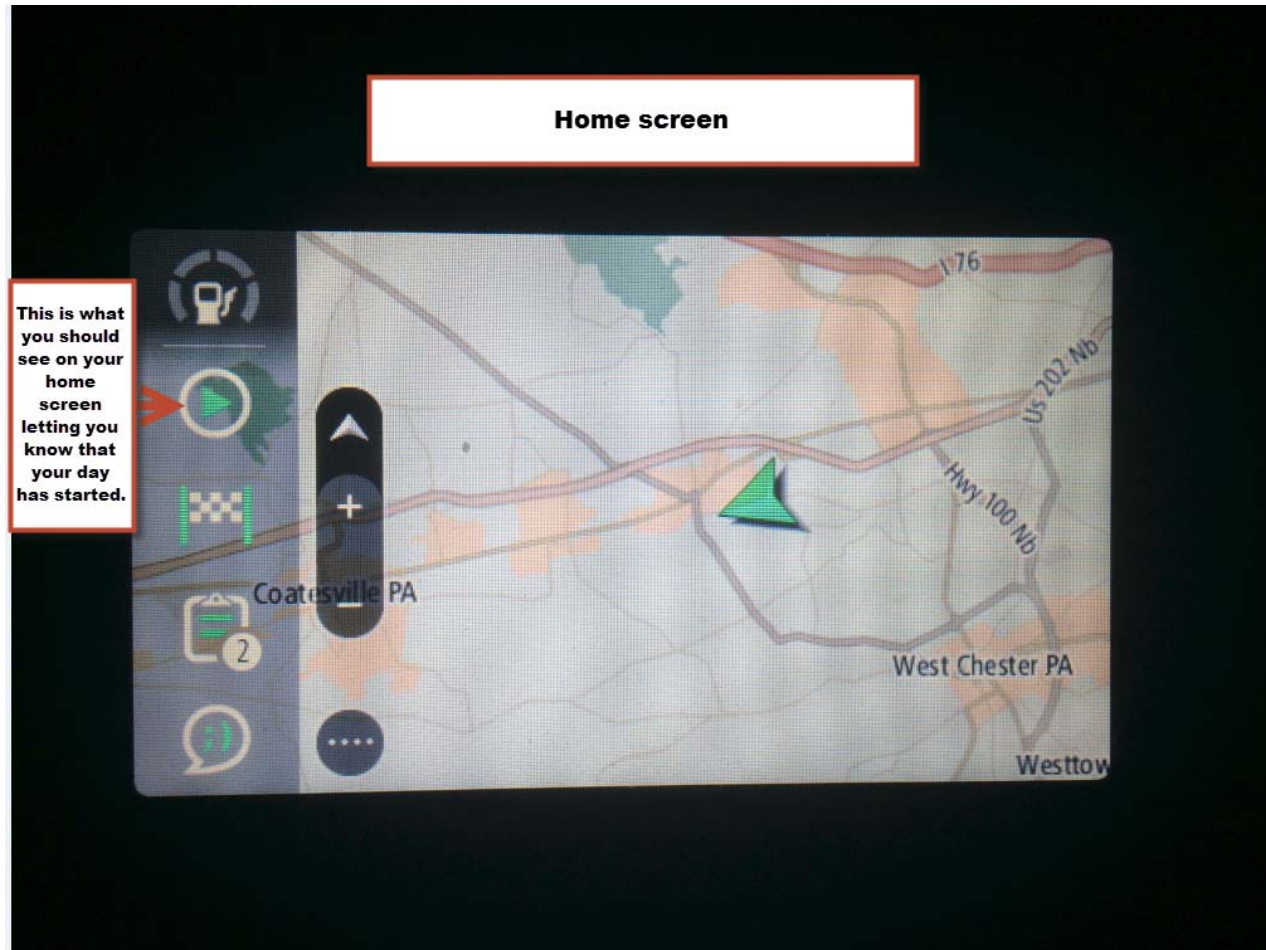
# New or different truck log in #6



# New or different truck log in #7

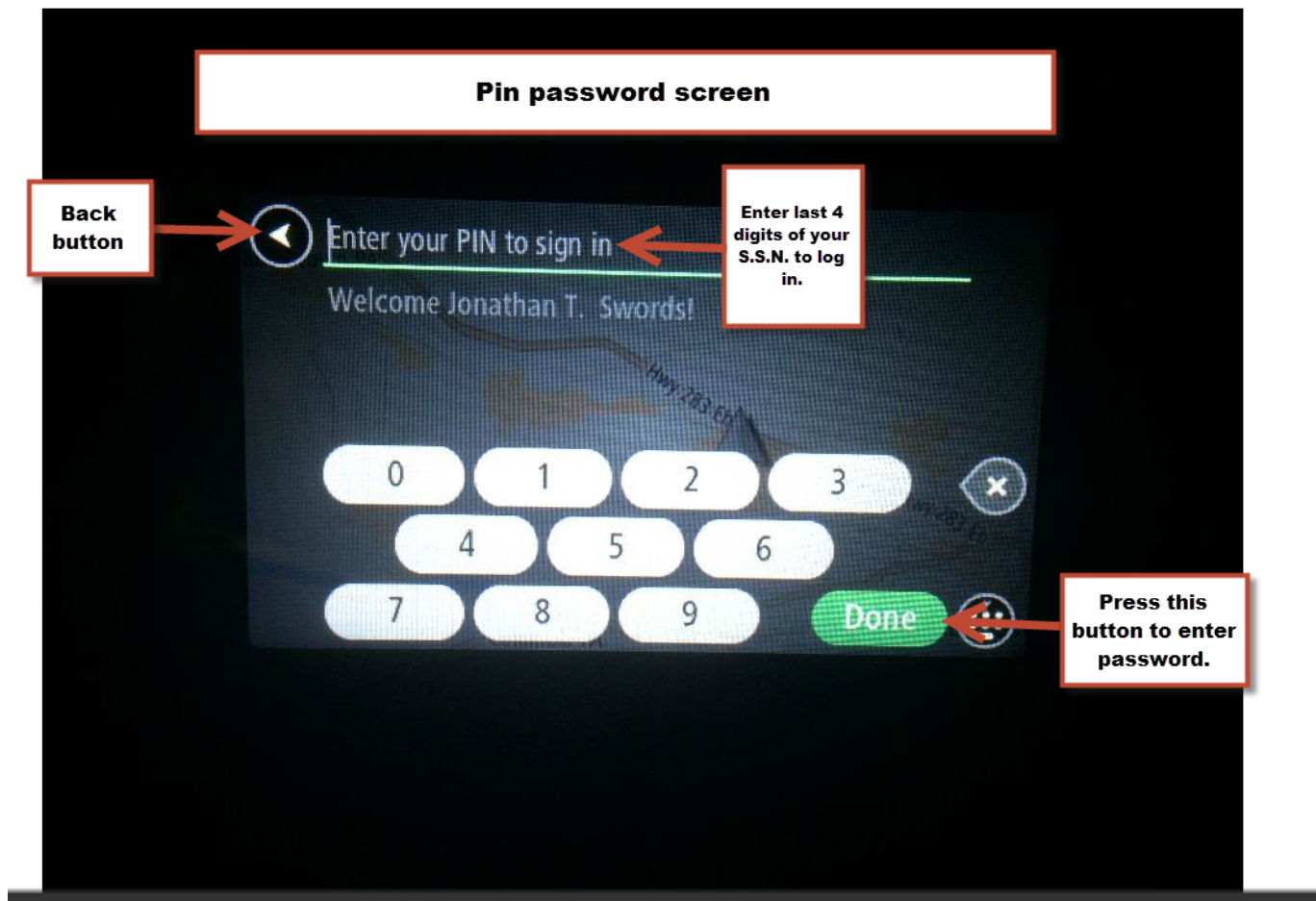


# New or different truck log in #8

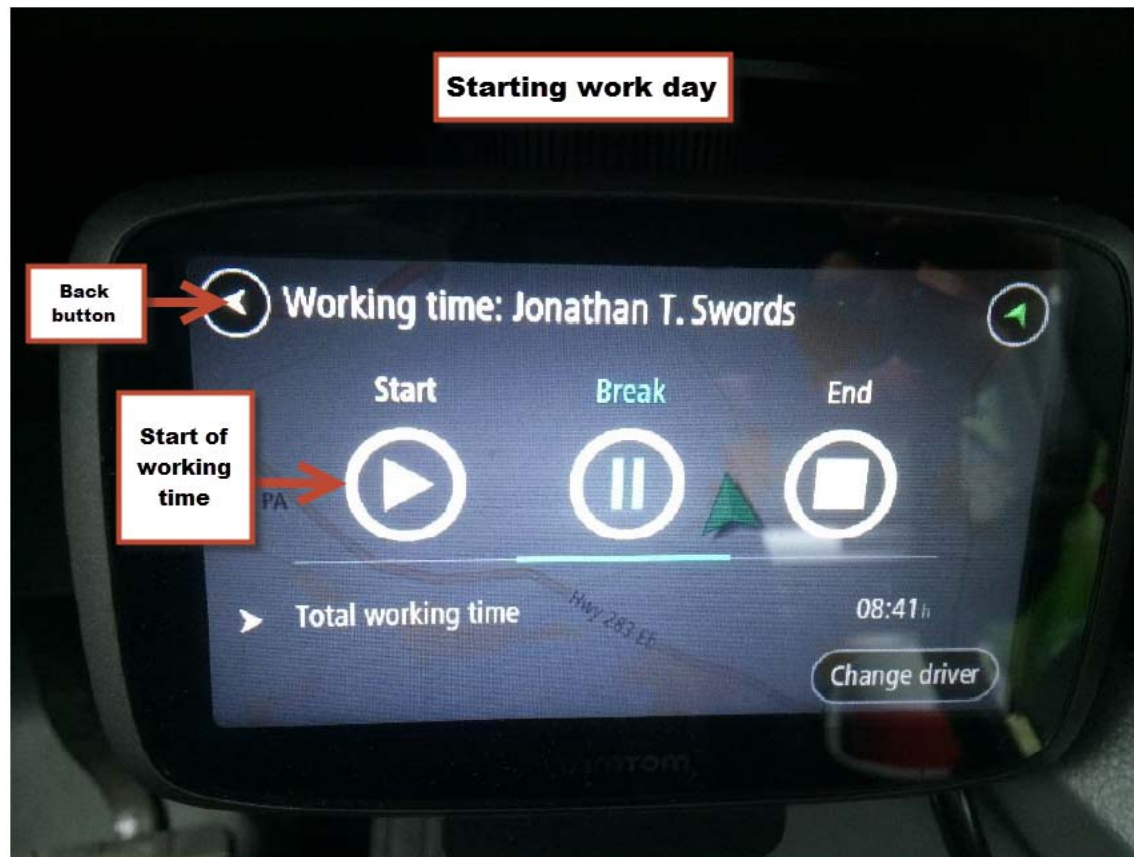




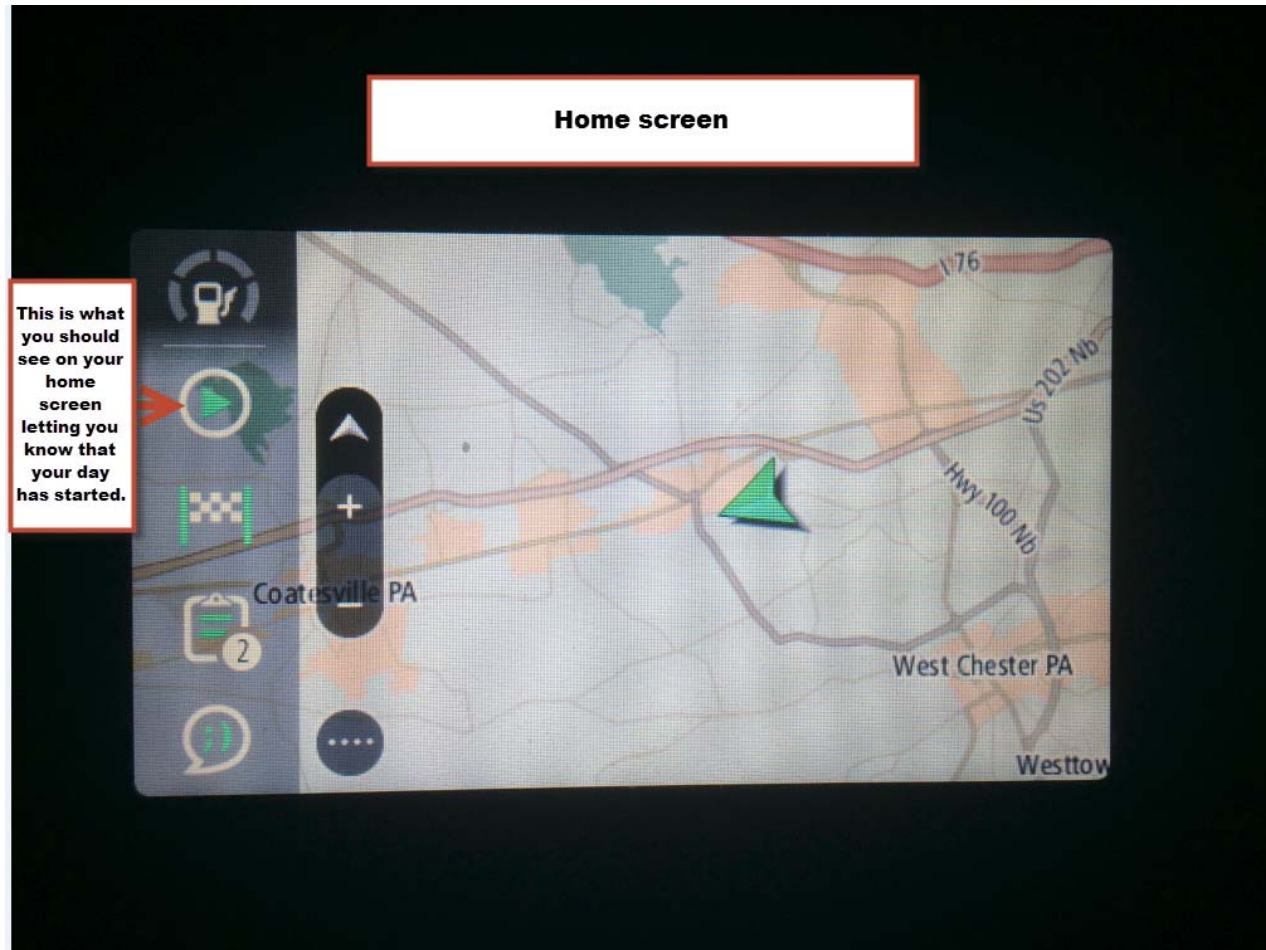
# Return – Log in to same truck #1



# Return - Log in to same truck #2



# Return - Log in to same truck #3

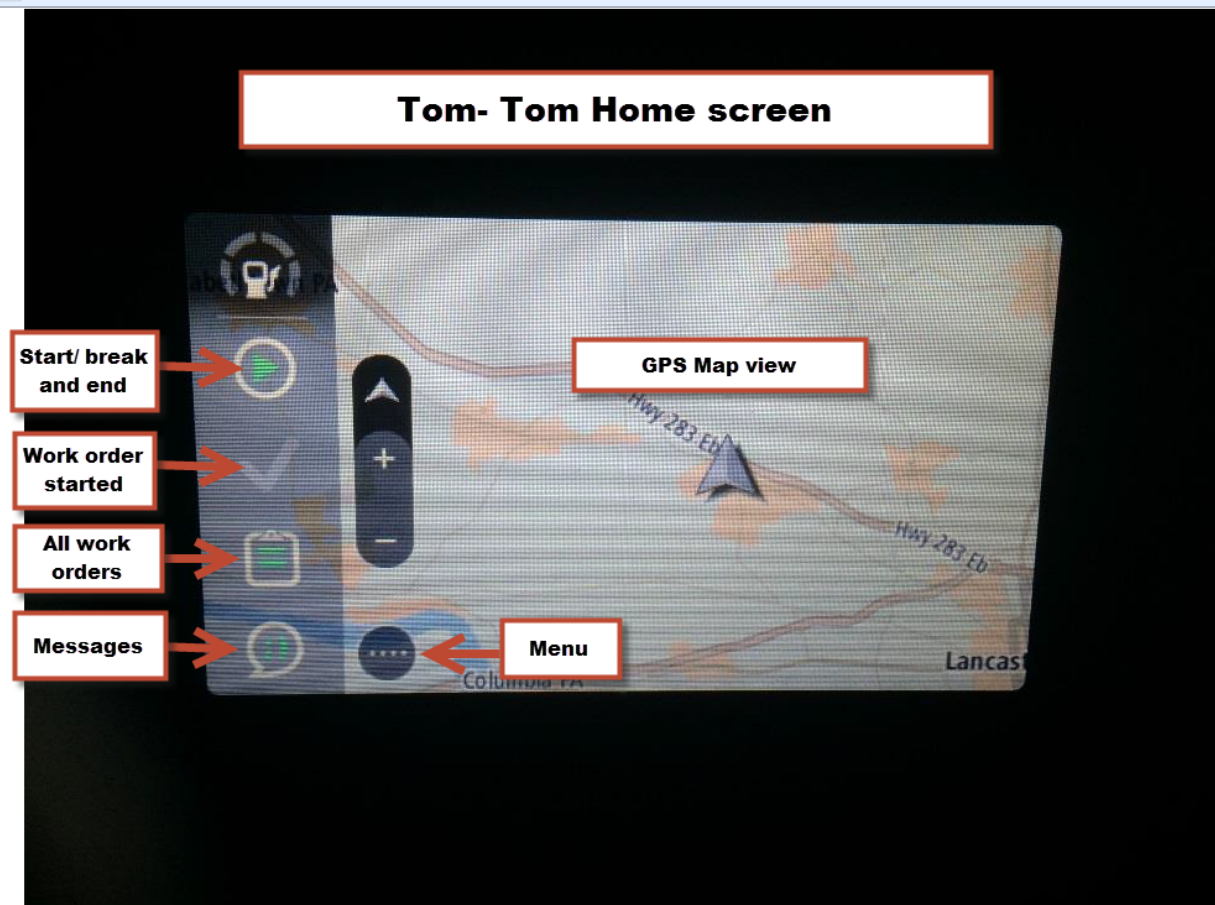


# Truck information

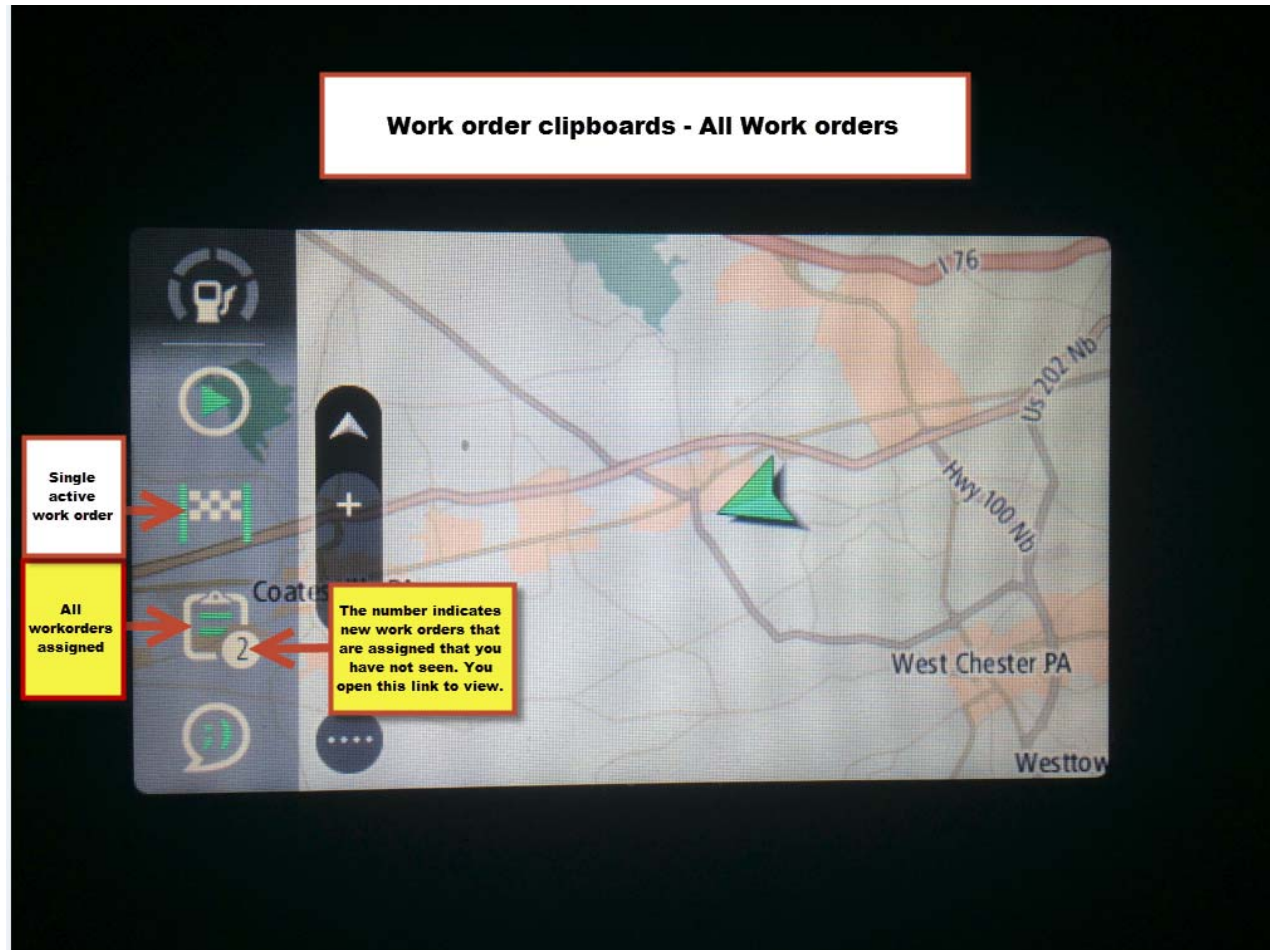




# Work orders #1



# Work orders #2



# Work orders #3

**All work orders tab -OPEN**

**Back button** → [Back arrow icon]

**Job #1 Active** → 10/9/2015 Pump 6000 gallon food processing waste from East side - skim the pump station (key in truck). Contact is Jim Werley between 3pm-10pm and John Pizzillo between 10pm-7am. CTC/A.S./RLK

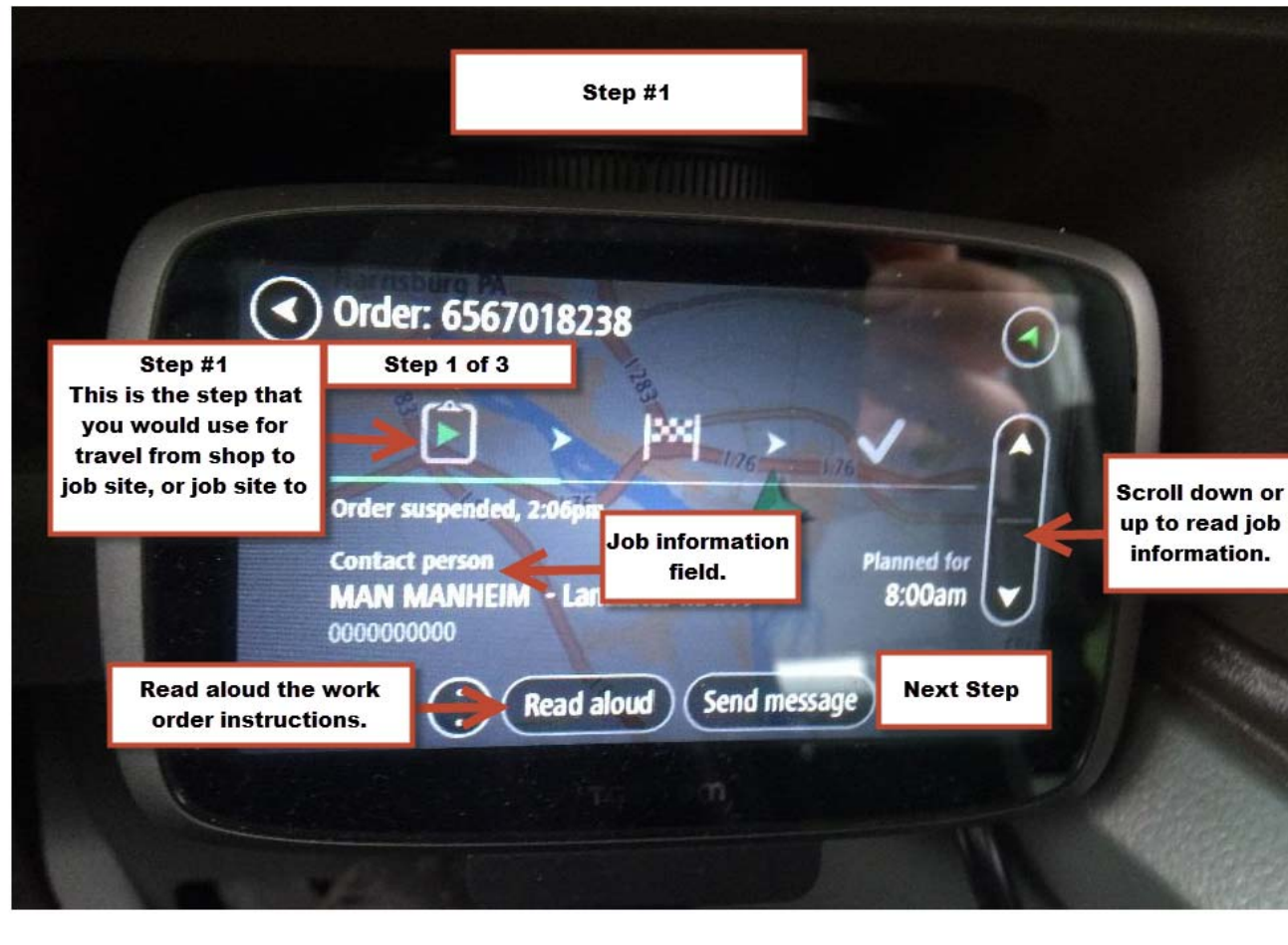
↓ **Order accepted** 3:15am 6567000581

**Job #3 Not active** → Hampton Inn (Holding Tank)  
Pull 1 to 2 loads from Frac Tank. Leave copy of work

**Orders: 3** → **Indicates 3 jobs assigned**

**To see Job #2 Not Active. You must hit the down arrow to view.**

# Work order #4 (Step #1)





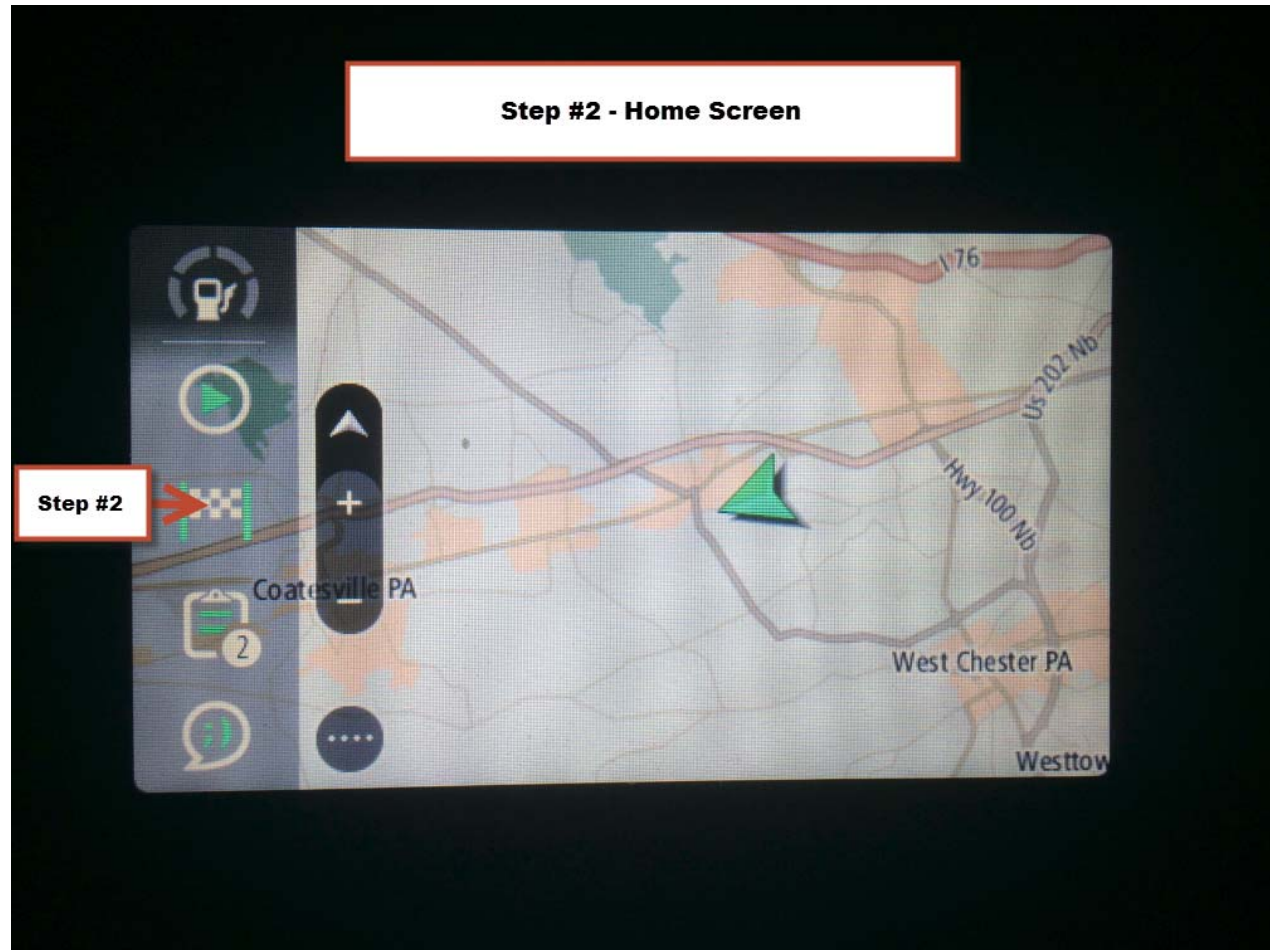
# Work order #5 (Step #1)



# Work order #6 (Step #2)

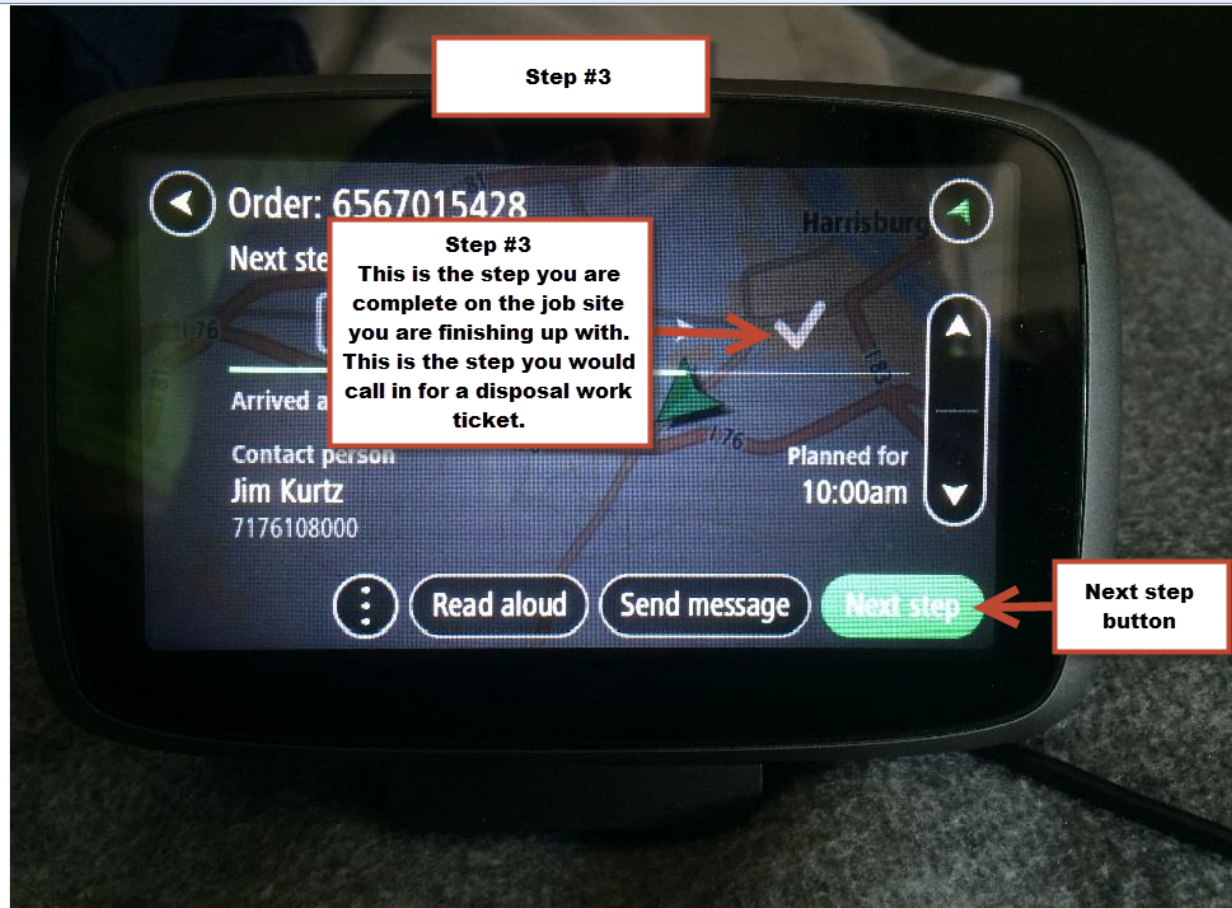


# Work orders #7 (Step #2)



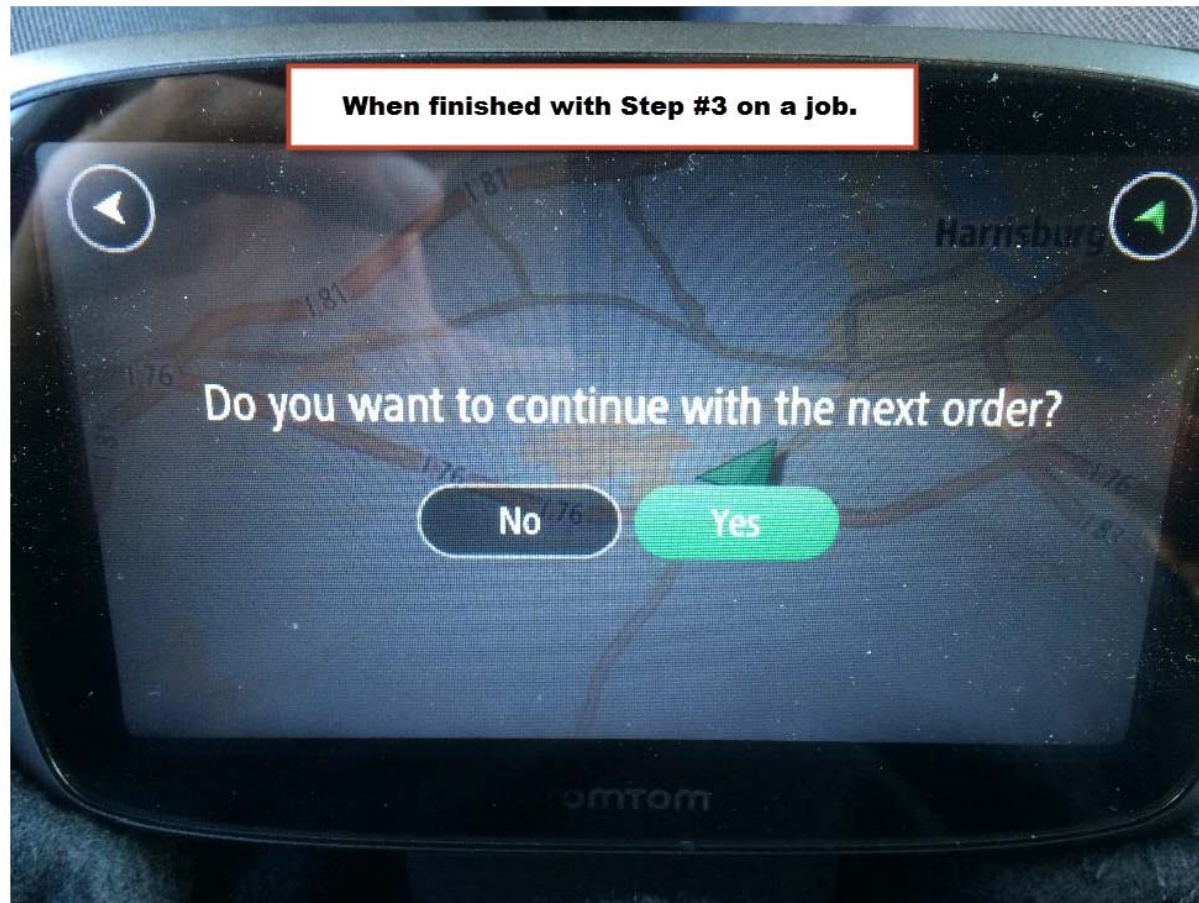


# Work order #8 (Step #3)

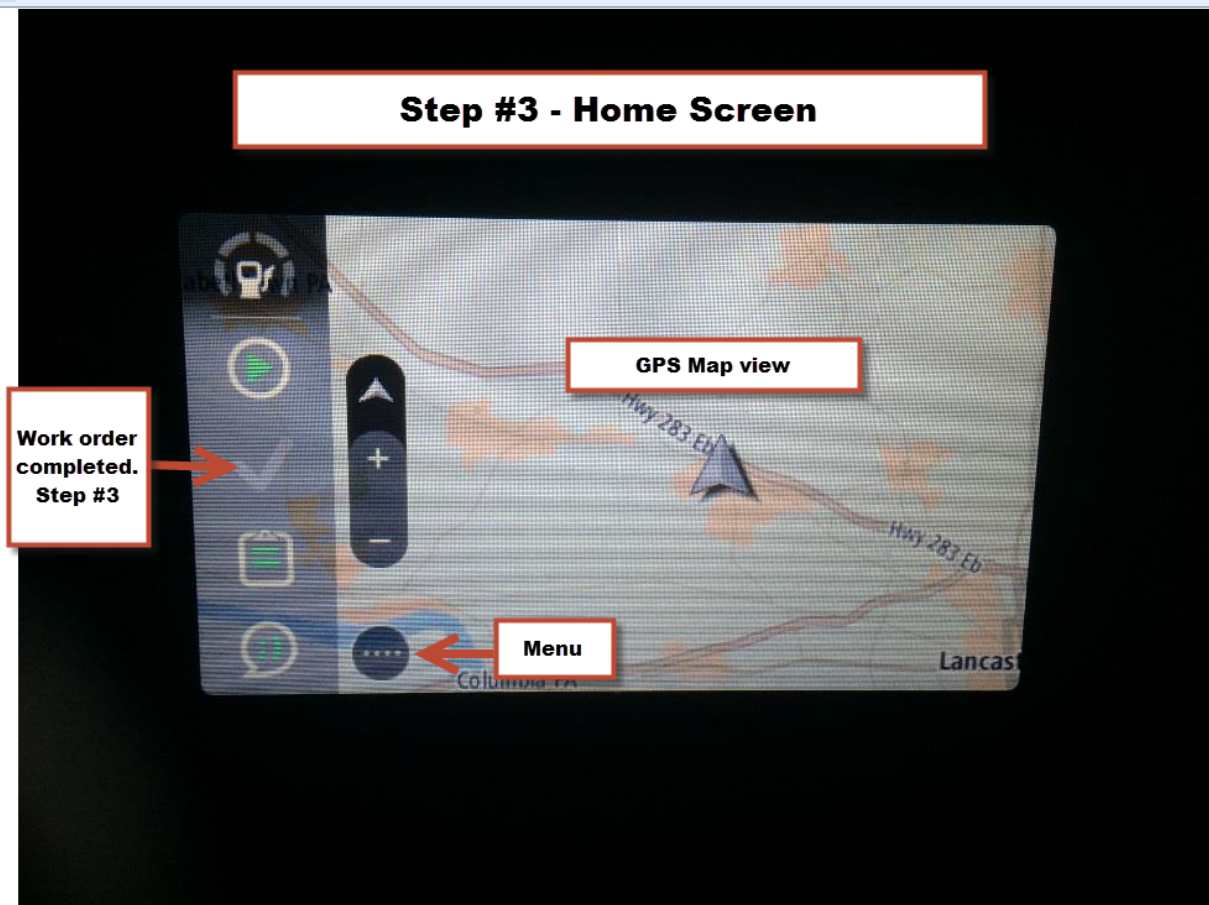




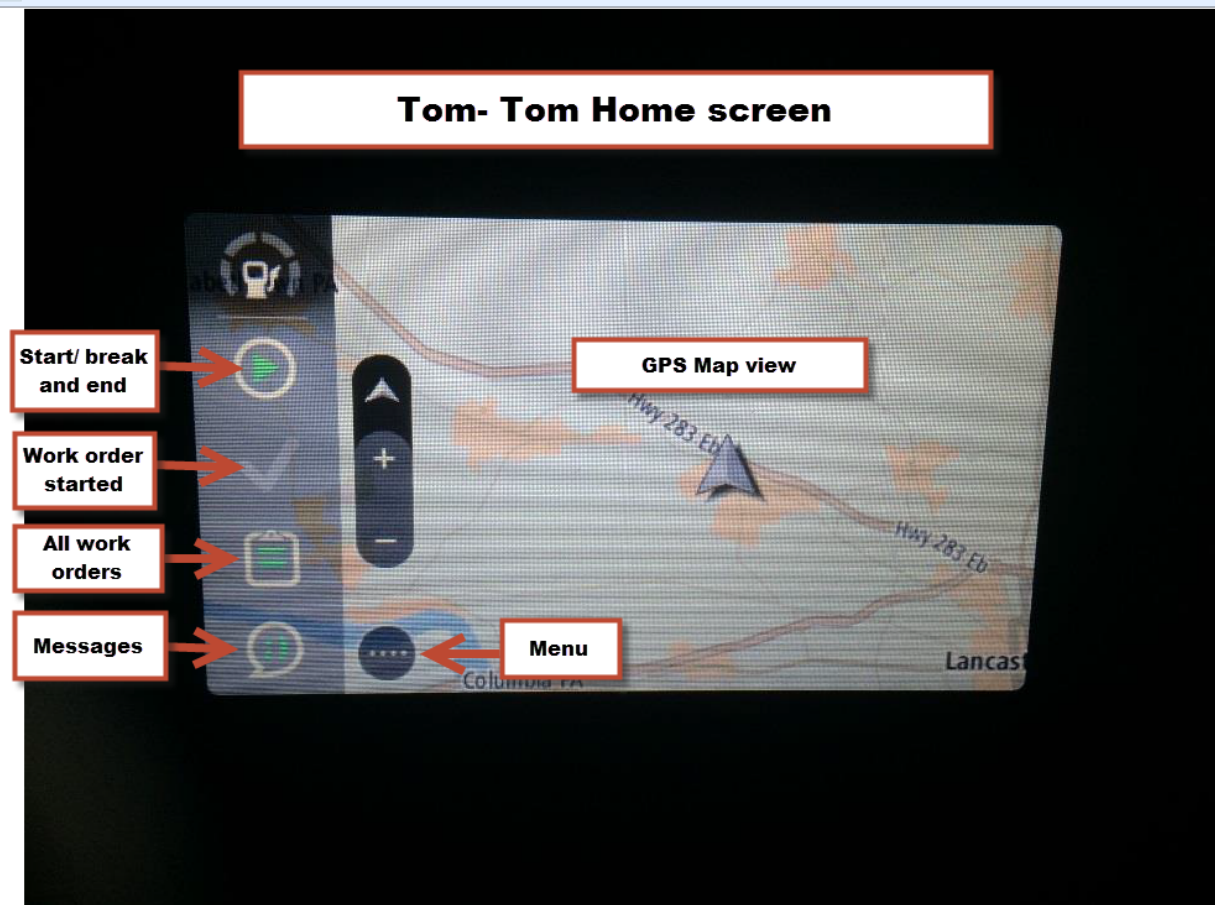
# Work order #9 (Completion)



# Work order #10 (Step #3)



# Suspending a work ticket #1



# Suspending a work ticket #2

**Clipboard work orders**

**Back button** → [Back arrow icon]

**Job #1 Active** → 10/9/2015 Pump 6000 gallon food processing waste from East side - skim the pump station (key in truck). Contact is Jim Werley between 3pm-10pm and John Pizzillo between 10pm-7am. CTC/A.S./RLK

↓ **Order accepted** 3:15am 6567000581

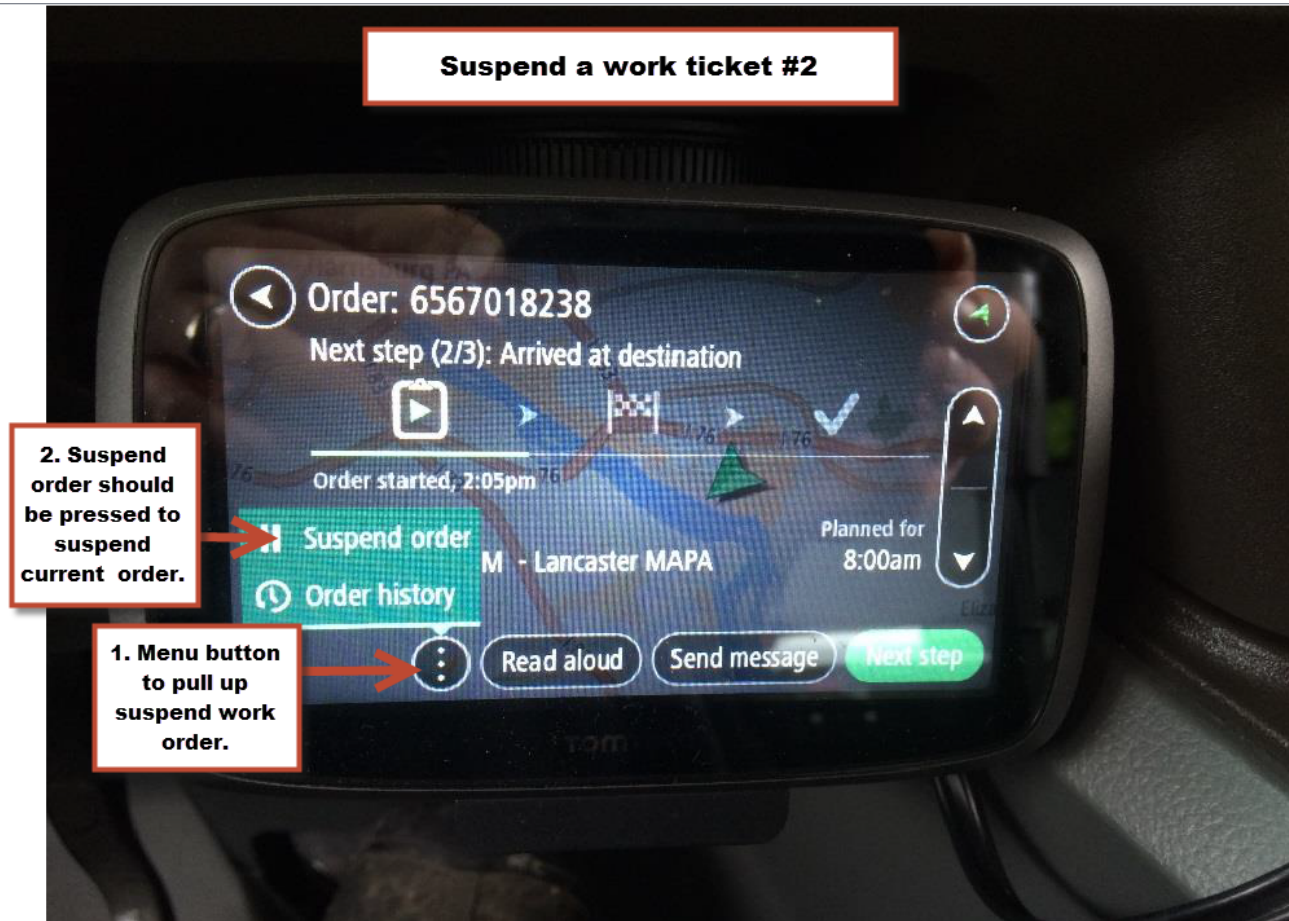
**Job #3 Not active** → Hampton Inn (Holding Tank)  
Pull 1 to 2 loads from Frac Tank. Leave copy of work

**Orders: 3** ← **Indicates 3 jobs assigned**

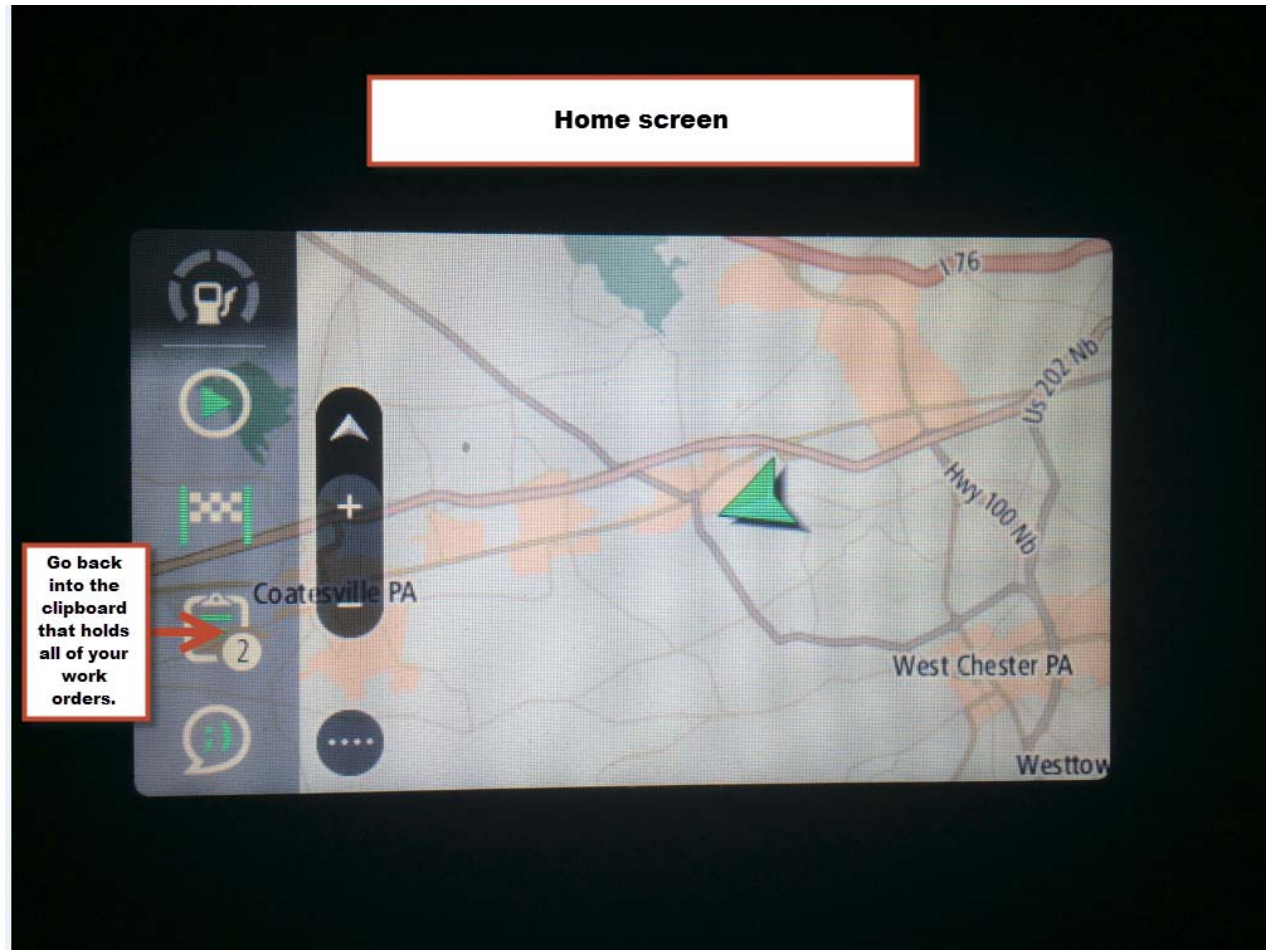
**To see Job #2 Not Active. You must hit the down arrow to view.** → [Down arrow icon]



# Suspending a work ticket #3



# Resuming a suspended work order #1



# Resuming a suspended work order #2

**Clipboard work orders**

**Back button** → Find an order

**Job #1 Active** → 10/9/2015 Pump 6000 gallon food processing waste from East side - skim the pump station (key in truck). Contact is Jim Werley between 3pm-10pm and John Pizzillo between 10pm-7am. CTC/A.S./RLK

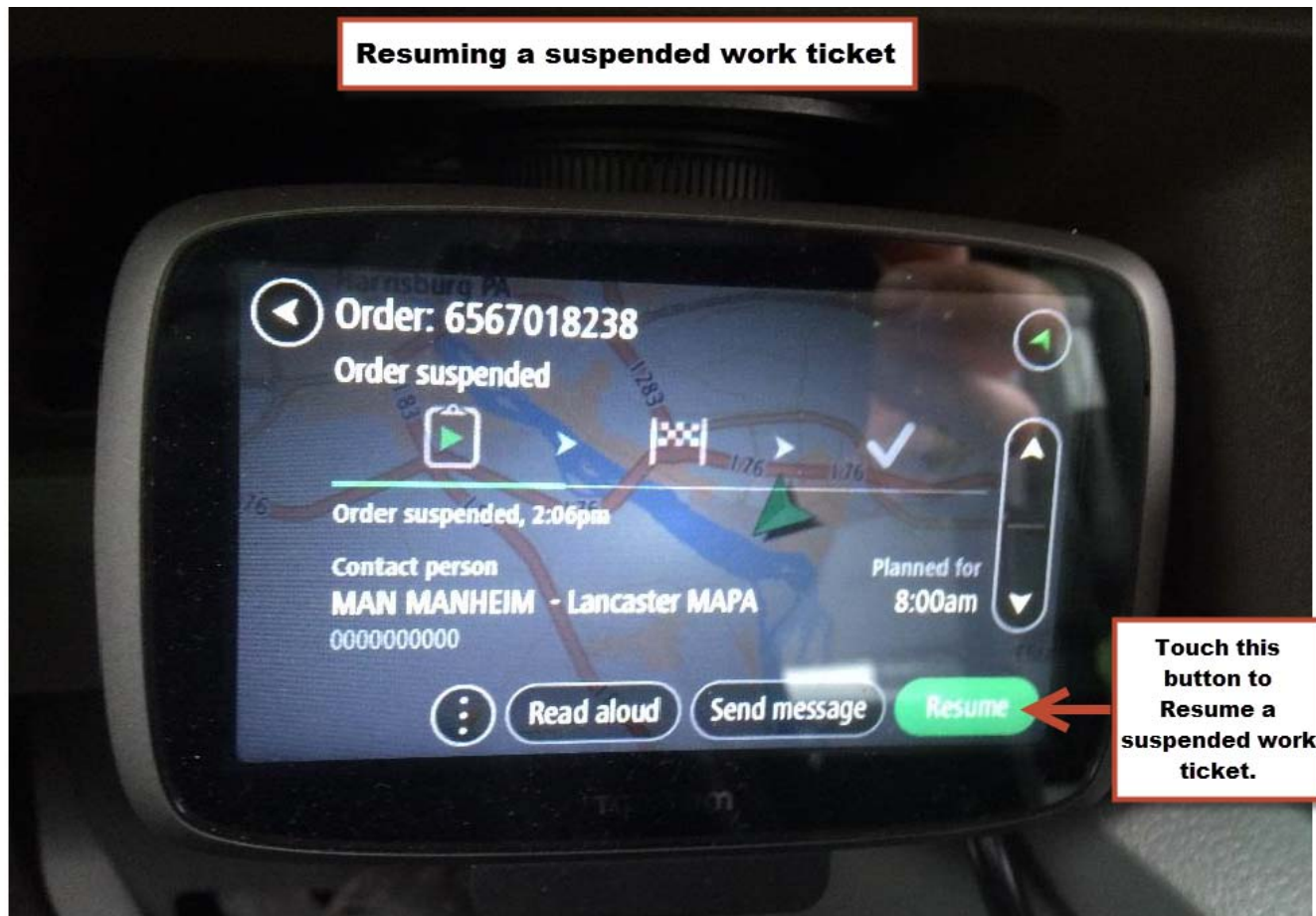
↓ **Order accepted** 3:15am 6567000581

**Job #3 Not active** → Hampton Inn (Holding Tank)  
Pull 1 to 2 loads from Frac Tank. Leave copy of work

**Orders: 3** ← **Indicates 3 jobs assigned**

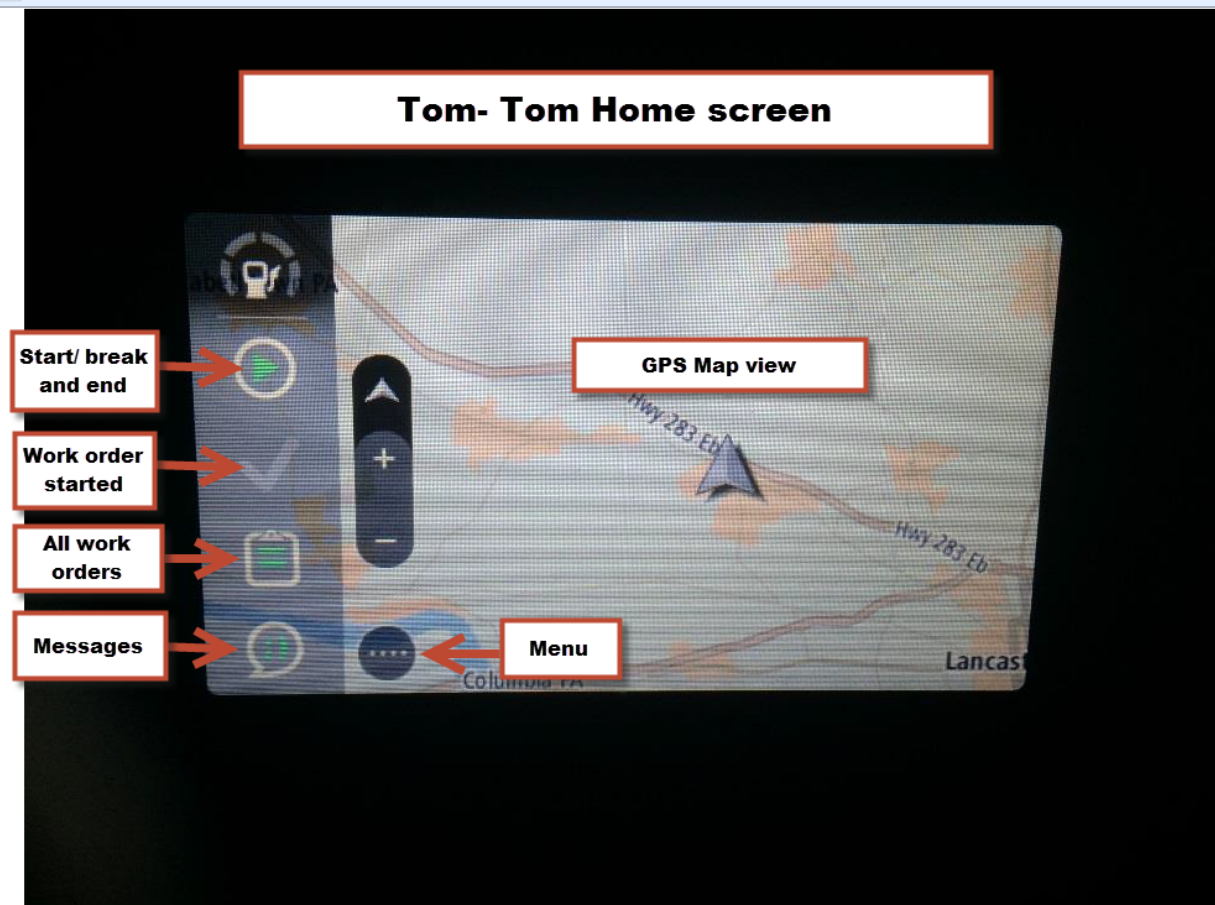
**To see Job #2 Not Active. You must hit the down arrow to view.**

# Resuming a suspended work ticket #3

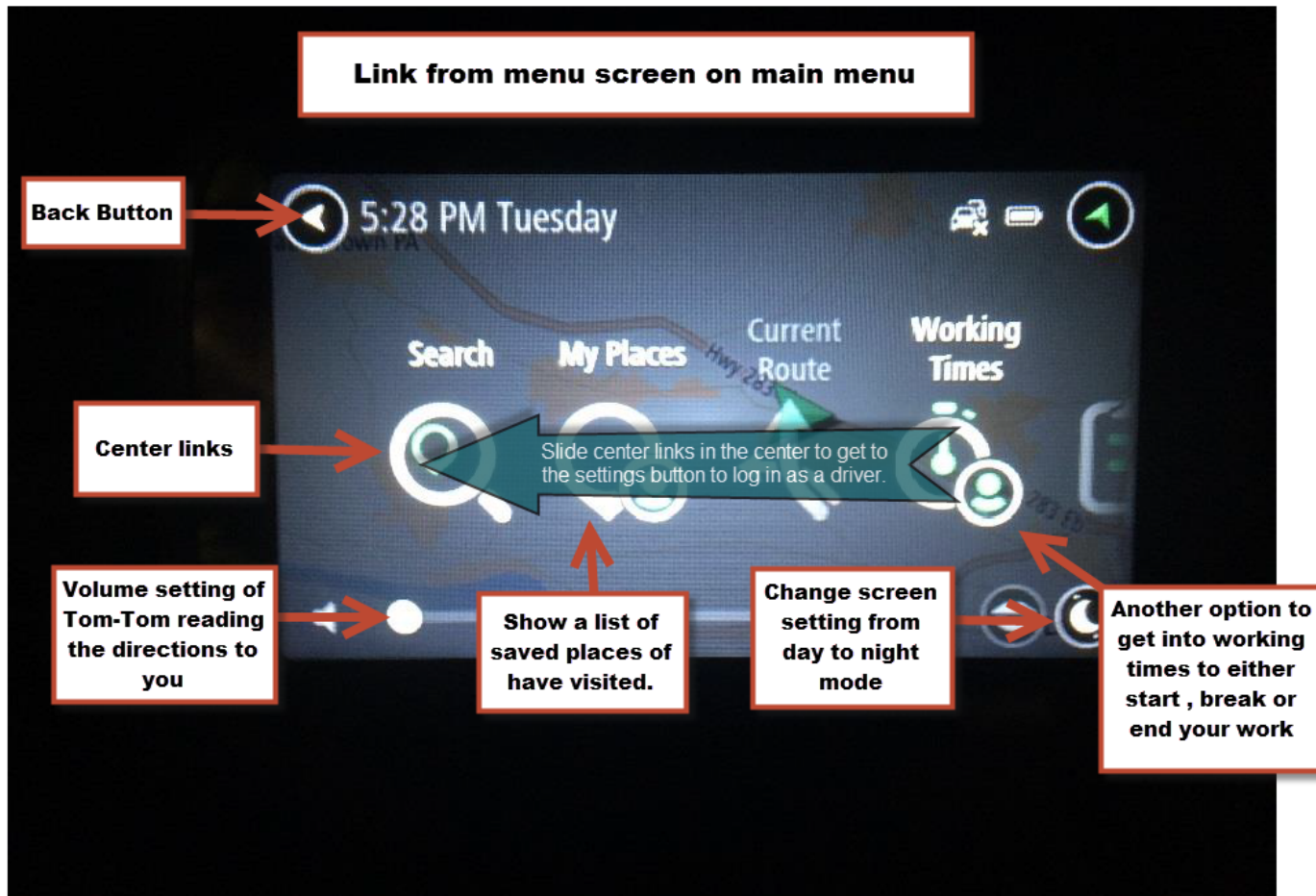




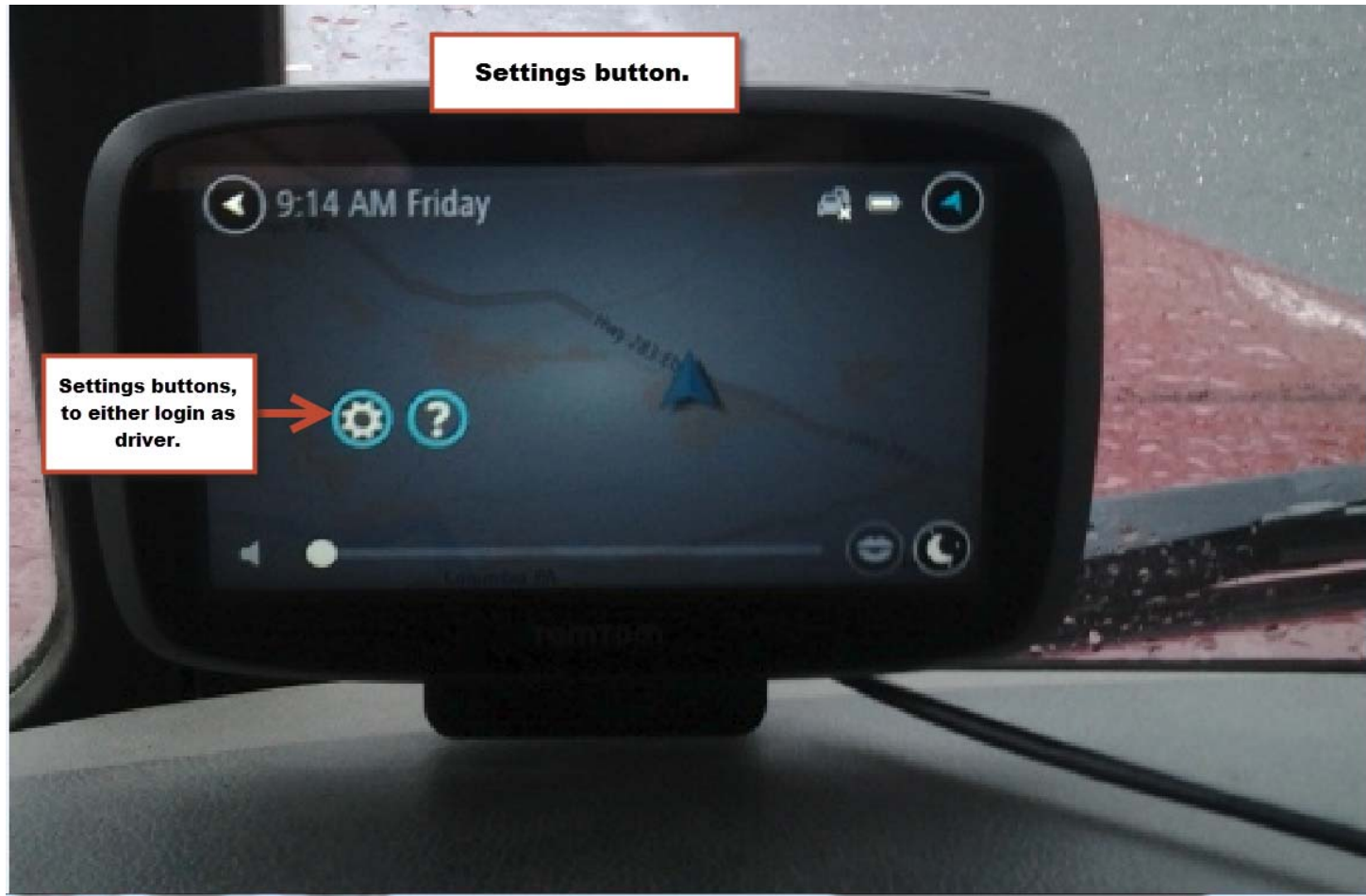
# Logging out #1



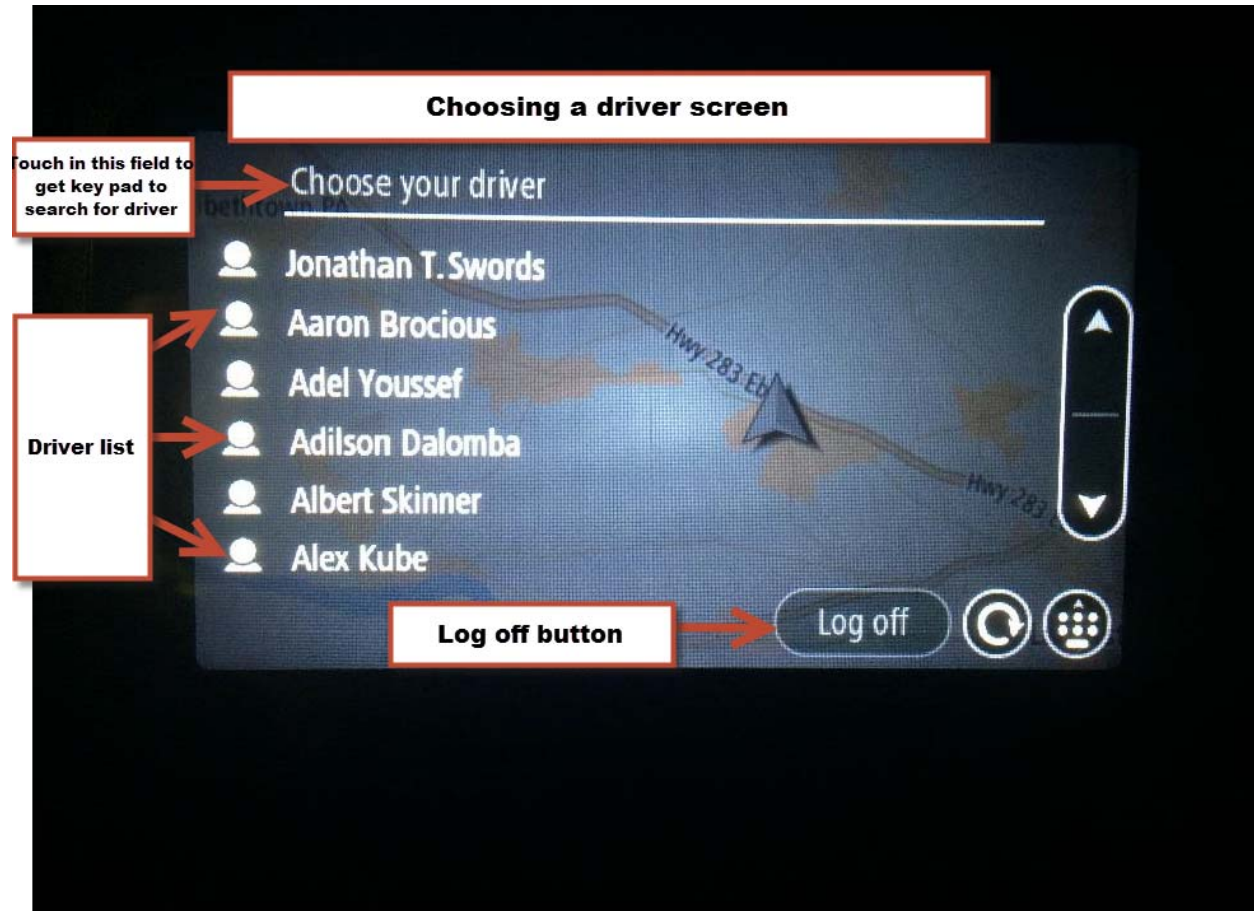
# Logging out #2



# Logging out #3

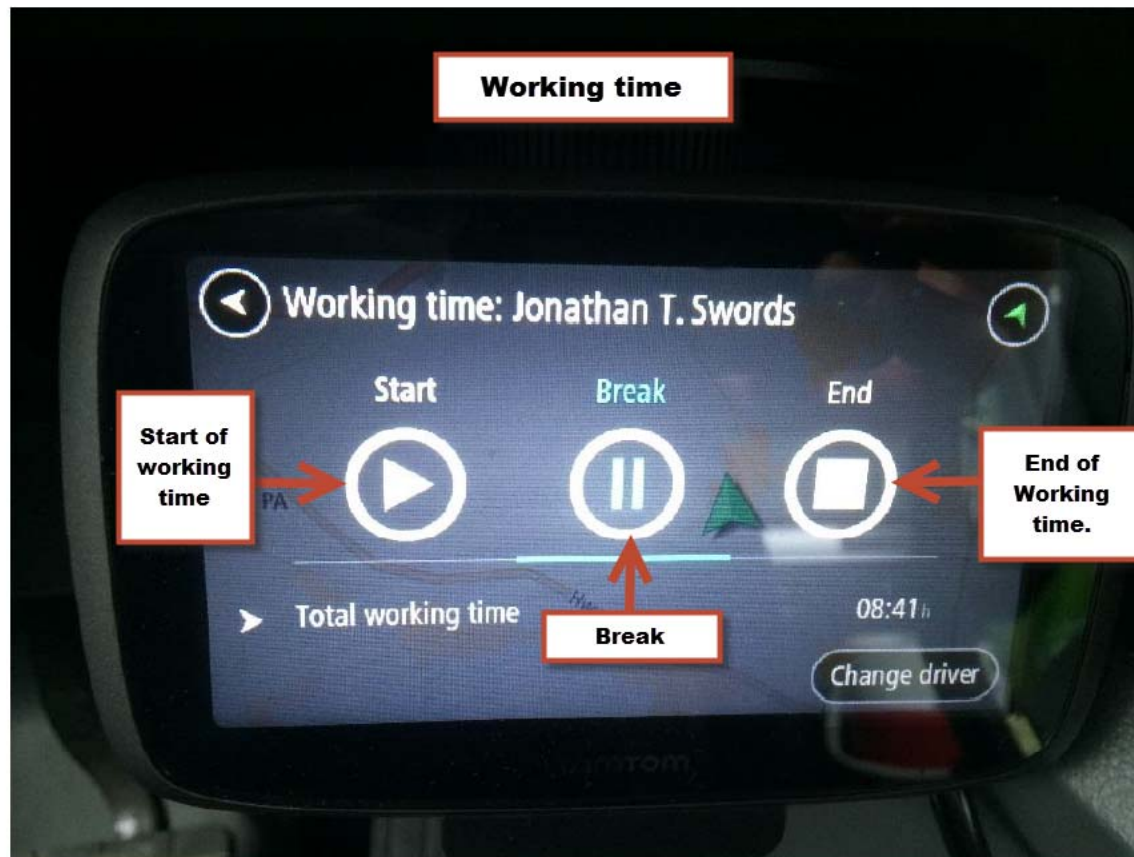


# Logging out #4





# Logging out #5



# Logging out #6

