

# ArcLogistics™

Route, Schedule, Navigate



**ESRI®**

The Geographic Advantage™

# ArcLogistics™

Route, Schedule, Navigate

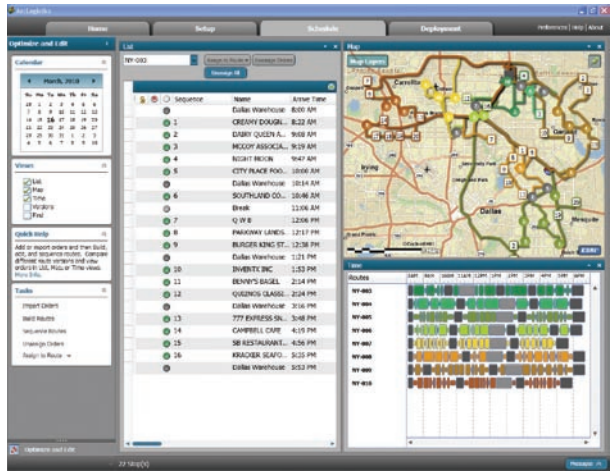
ArcLogistics™ helps you create optimum routes and schedules based on specific business operations including vehicle capacities, driver specialties, street network restrictions, and customer time windows. With ArcLogistics, you can build routes and schedules that reduce fuel consumption, labor hours, and vehicle use.

## More than Point A to Point B

Optimized routing is more than just driving from point A to point B. You need a solution that will help you factor in every element that affects your daily schedule.

ArcLogistics helps you get maximum performance from your fleet and drivers so you can plan and grow your business with resources you already have.

Customers who use ArcLogistics to plan their routes typically save up to 30 percent on vehicle-related costs.



## Is ArcLogistics for You?

If you need to find locations, assign stops to vehicles, and sequence stops considering factors such as time, cost, capacity, and productivity, ArcLogistics will save you time and money.

## With ArcLogistics, You Will

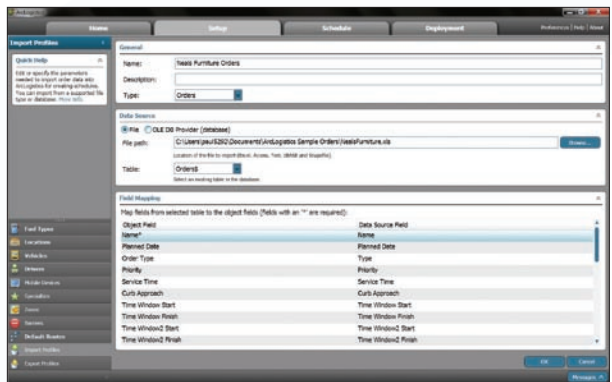
- Use less fuel.
- Reduce driver overtime.
- Minimize maintenance.
- Improve on-time performance.

# How Does ArcLogistics Work?

Build optimized routes and schedules with ArcLogistics in just four steps:

## 1 Import customer orders and addresses.

ArcLogistics automatically geocodes your orders and locations.



## 2 Define driver and vehicle specifications.

- Does a work crew specialize in a certain type of repair?
- Do you get better gas mileage with a pickup and a small utility trailer versus a box van?

Name	Vehicle	Driver	Days	Color	Start Time (Week - Break)	Start Location	Time At Start	End Location
NP-033	Truck-033	S. Miller	Mon, Tue	Orange	8:00 AM - 8:00 AM, 60 mins, 11:00 A.	Dallas Warehouse	20 m	Dallas Warehouse
NP-039	Truck-039	S. Cooper	Mon, Tue	Orange	8:00 AM - 8:00 AM, 60 mins, 11:00 A.	Dallas Warehouse	20 m	Dallas Warehouse
NP-038	Truck-038	P. Sanders	Everyday	Orange	8:00 AM - 8:00 AM, 60 mins, 11:00 A.	Dallas Warehouse	20 m	Dallas Warehouse
NP-037	Truck-037	J. Higgins	Everyday	Orange	8:00 AM - 8:00 AM, 60 mins, 11:00 A.	Dallas Warehouse	20 m	Dallas Warehouse
NP-036	Truck-036	K. Clayton	Everyday	Orange	8:00 AM - 8:00 AM, 60 mins, 11:00 A.	Dallas Warehouse	20 m	Dallas Warehouse
NP-035	Truck-035	A. King	Everyday	Green	8:00 AM - 8:00 AM, 60 mins, 11:00 A.	Dallas Warehouse	20 m	Dallas Warehouse
NP-034	Truck-034	J. Bahag	Everyday	Green	8:00 AM - 8:00 AM, 60 mins, 11:00 A.	Dallas Warehouse	20 m	Dallas Warehouse
NP-033	Truck-033	K. Chismore	Everyday	Green	8:00 AM - 8:00 AM, 60 mins, 11:00 A.	Dallas Warehouse	20 m	Dallas Warehouse
NP-032	Truck-032	R. Newman	Sun and S.	Blue	8:00 AM - 8:00 AM, 60 mins, 11:00 A.	Dallas Warehouse	20 m	Dallas Warehouse
NP-031	Truck-031	R. Rose	Sun and S.	Blue	8:00 AM - 8:00 AM, 60 mins, 11:00 A.	Dallas Warehouse	20 m	Dallas Warehouse

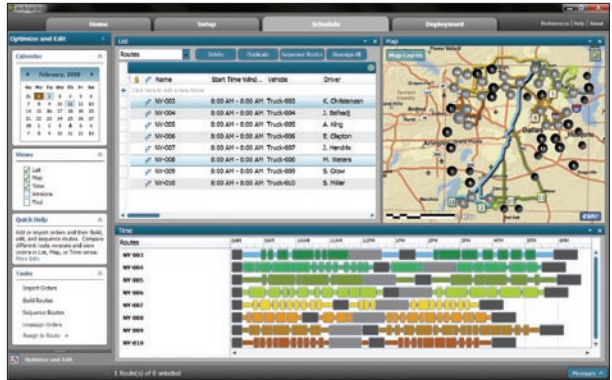
ArcLogistics considers all your driver and vehicle characteristics to help you create optimum routes.

### 3 Create optimized routes.

ArcLogistics quickly generates maps and directions of the best routes based on

- Business rules
- Customer preferences
- Vehicle and driver traits
- Street characteristics
- Changes that happen every day

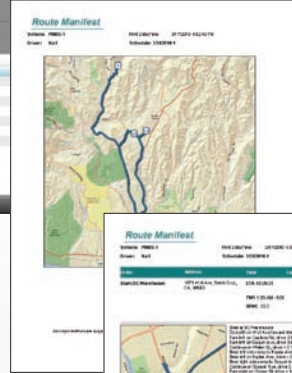
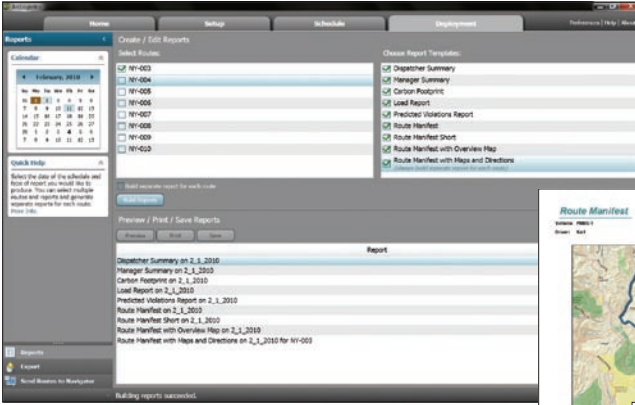
Routes can quickly be edited and pushed out to the drivers.



### What Makes ArcLogistics Different

ArcLogistics goes well beyond finding the shortest path between two stops. When you build routes with ArcLogistics, you consider your driver and vehicle costs, vehicle capacities, customer schedules, and street restrictions. Routes and schedules created with ArcLogistics are easy to edit and can be changed as needed.

ArcLogistics is not intended to replace the knowledge and experience of a fleet manager or dispatcher. Rather, ArcLogistics is a tool that helps these professionals consider all relevant factors when building routes and schedules.



## 4 Provide route plans to drivers.

Ordering stops for the optimum schedule is the first priority. Extend your savings by ensuring that drivers follow the exact streets chosen for the route through

- In-vehicle navigation devices
- Paper manifests with turn-by-turn directions

**Download Now!**

## Download and Get Started Today

ArcLogistics is easy to download and install. You pay based on the number of vehicles you need to route, making it affordable for small fleets and scalable for larger, enterprise operations. Because ArcLogistics is a subscription-based service, there's no initial investment—payback is immediate.

Try ArcLogistics for 30 days.  
Visit [www.esri.com/arclogistics](http://www.esri.com/arclogistics).

## ArcLogistics Works with Software You Already Have

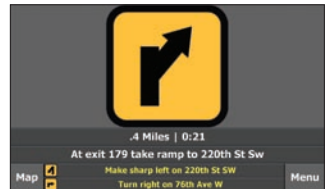
Since ArcLogistics is built on open and standard technology, orders and customer data can be imported from any Open Database Connectivity (ODBC)-compliant database. For example, many leading accounting, inventory management, and customer relationship management systems are already compatible with ArcLogistics.

## Optimal Route Planning + GPS

By sequencing stops and assigning drivers to routes, ArcLogistics builds efficiency into your operations before your vehicles leave the office or warehouse. When combined with the turn-by-turn directions provided by GPS, you can conduct end-to-end route planning and execution. ArcLogistics can send your preoptimized routes to in-vehicle GPS devices from leading vendors or ESRI's ArcLogistics Navigator.

## About ESRI

ESRI is the market leader in providing geographic information system (GIS) solutions to organizations around the world. Our reputation is built on decades of experience in helping organizations solve spatially related business problems.





**ESRI**<sup>®</sup>

380 New York Street  
Redlands, CA 92373-8100

*Return Service Requested*

*My ESRI News* keeps you connected with GIS users and events in your area. Sign up today at [www.esri.com/myesri/news](http://www.esri.com/myesri/news).